

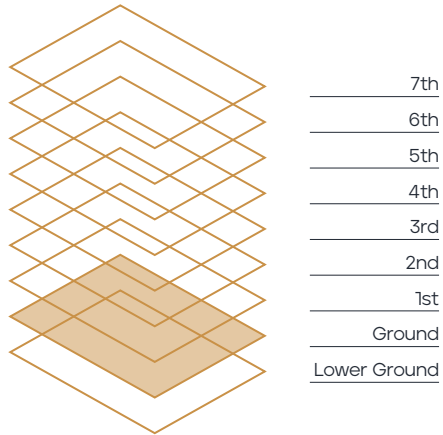
Ground Floor

8,244 Sq Ft / 766 Sq M

West Office
4,833 Sq Ft / 449 Sq M

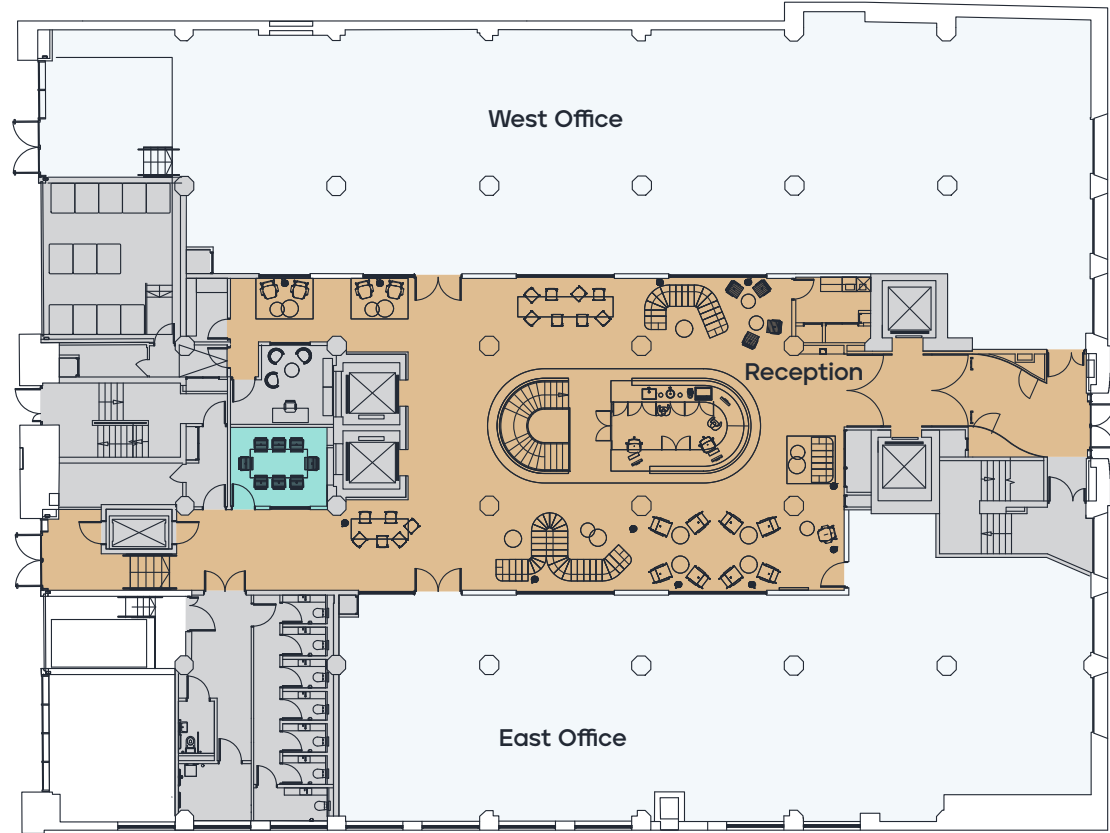
East Office
3,411 Sq Ft / 317 Sq M

Reception
3,293 Sq Ft / 306 Sq M



CHAMBER STREET

PRESCOT STREET



For indicative purposes. Not to scale.



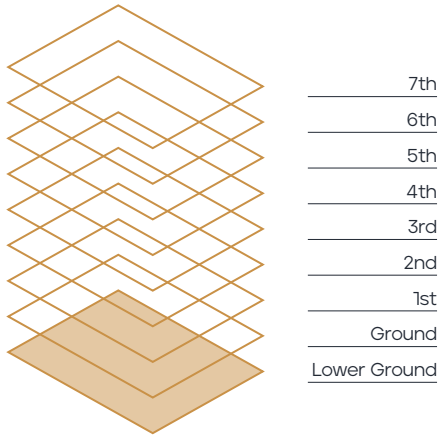
● Office ● Core ● Reception ● Meeting Room

Floor Plans

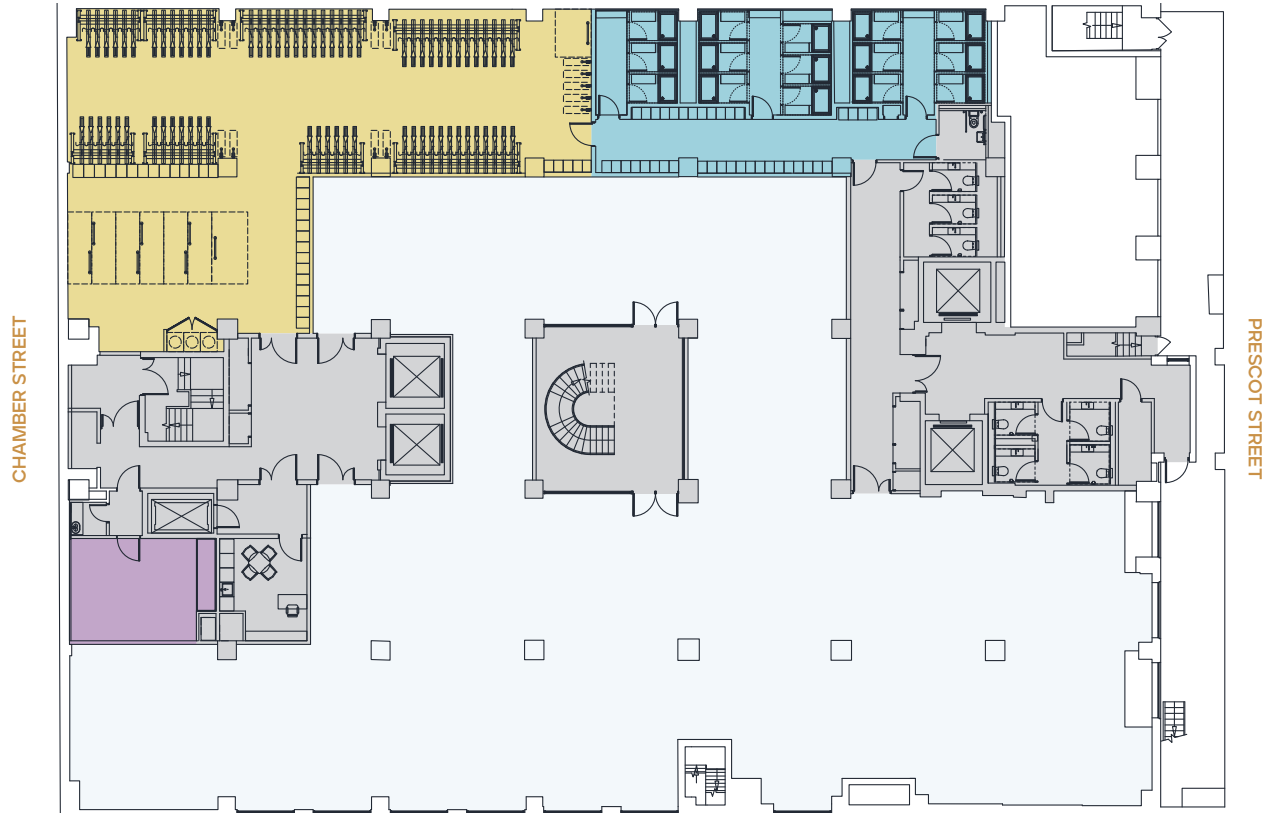
Lower Ground Floor

7,663 Sq Ft / 712 Sq M

- 15 showers
- 181 lockers
- 163 bicycle spaces
- 33 electric charging spaces
- 8 oversized spaces



For indicative purposes. Not to scale.

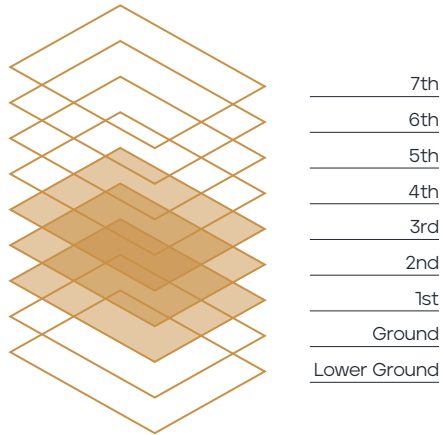


- Office
- Core
- Showers
- Cycle Store
- Multi Faith Room

Floor Plans

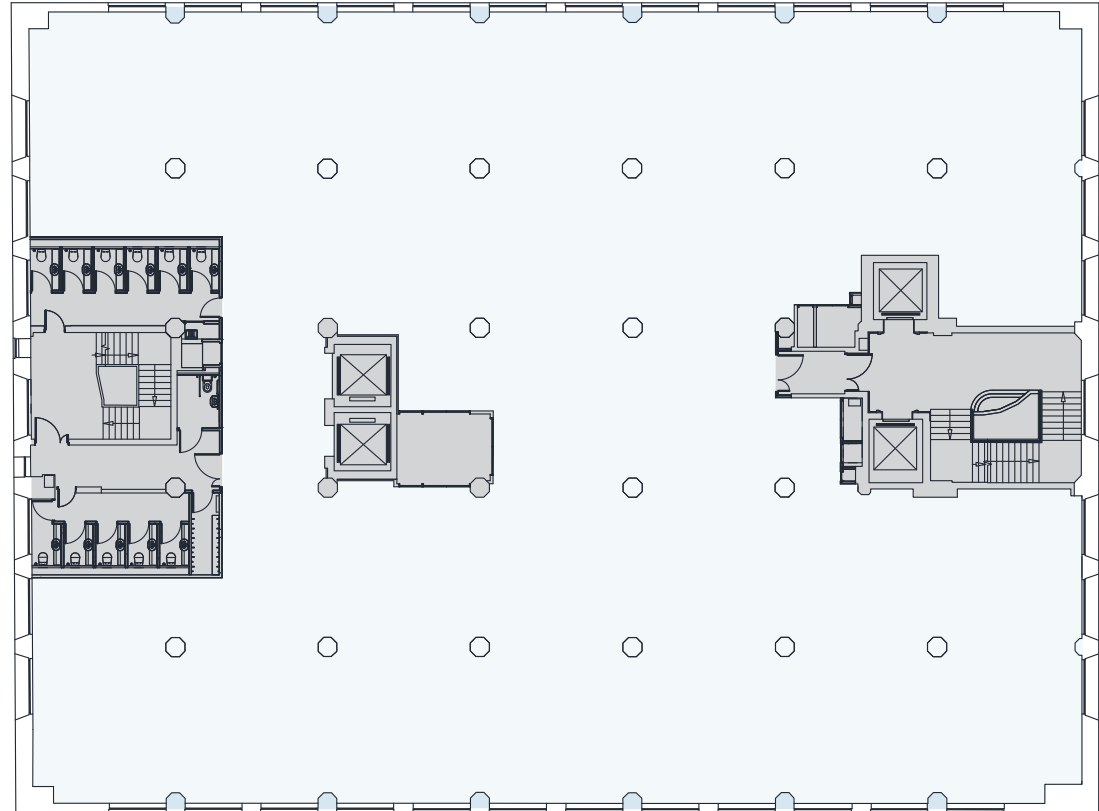
1st-3rd Floor

13,039 Sq Ft / 1,211 Sq M



For indicative purposes. Not to scale.

CHAMBER STREET



PRESCOTT STREET

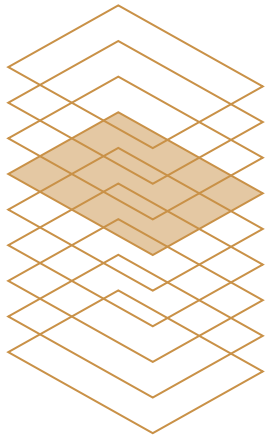


● Office ● Core

Floor Plans

4th Floor

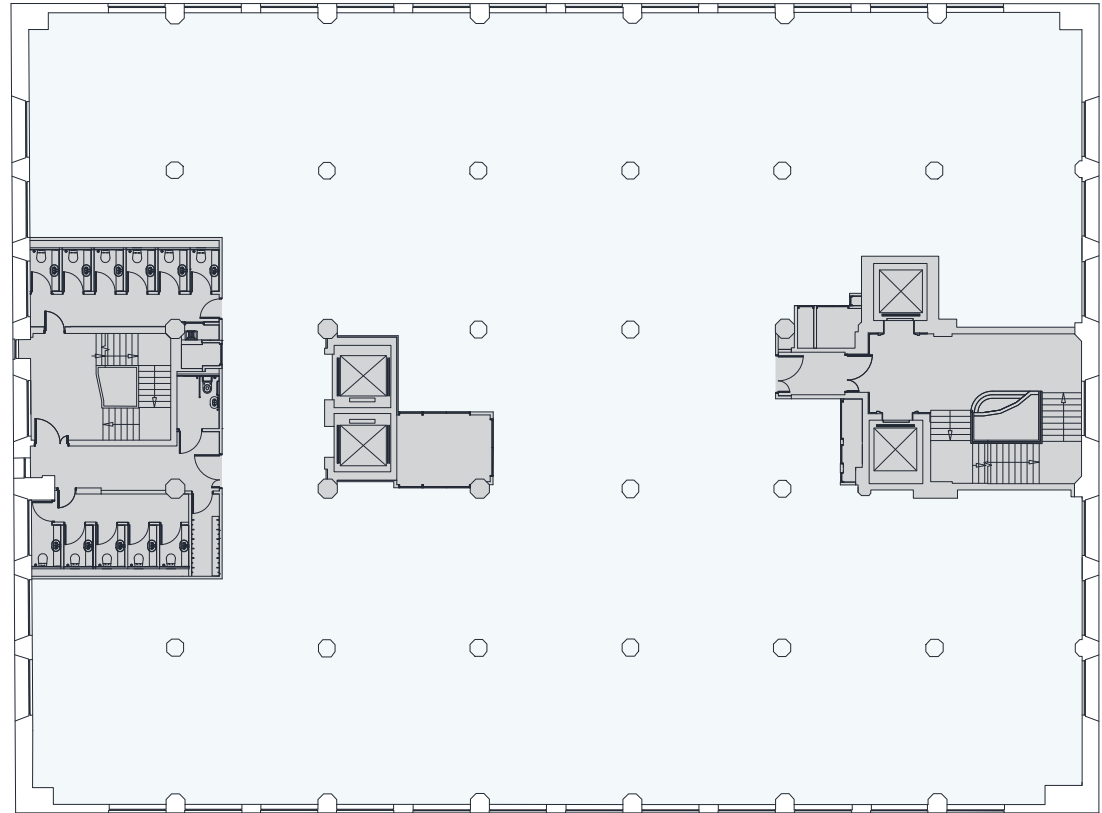
13,100 Sq Ft / 1,217 Sq M



- 7th
- 6th
- 5th
- 4th
- 3rd
- 2nd
- 1st
- Ground
- Lower Ground

For indicative purposes. Not to scale.

CHAMBER STREET



PRESCOT STREET

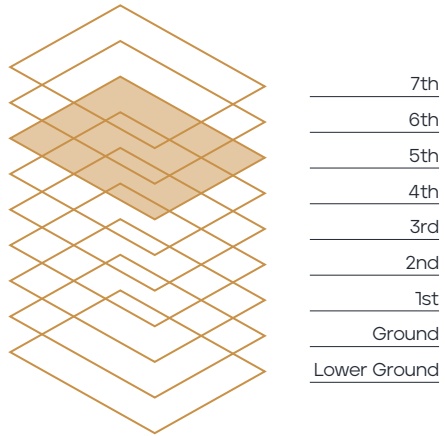


● Office ● Core

Floor Plans

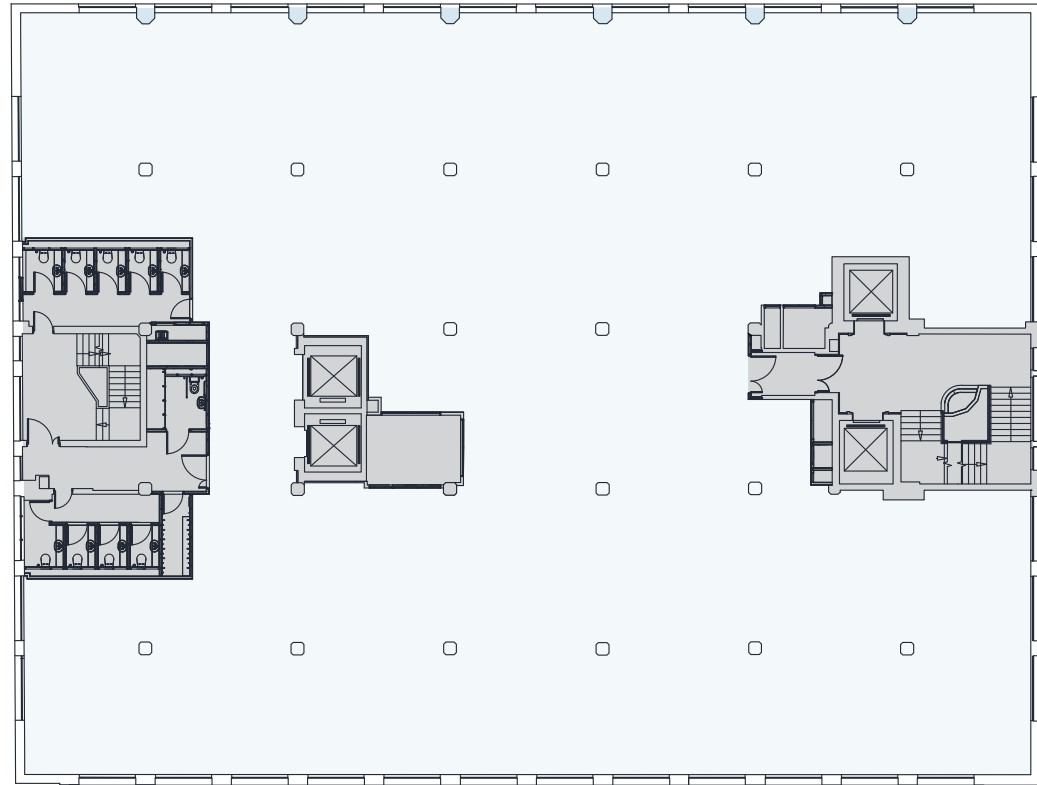
5th Floor

12,052 Sq Ft / 1,120 Sq M



For indicative purposes. Not to scale.

CHAMBER STREET



PRESCOTT STREET



● Office ● Core

Floor Plans

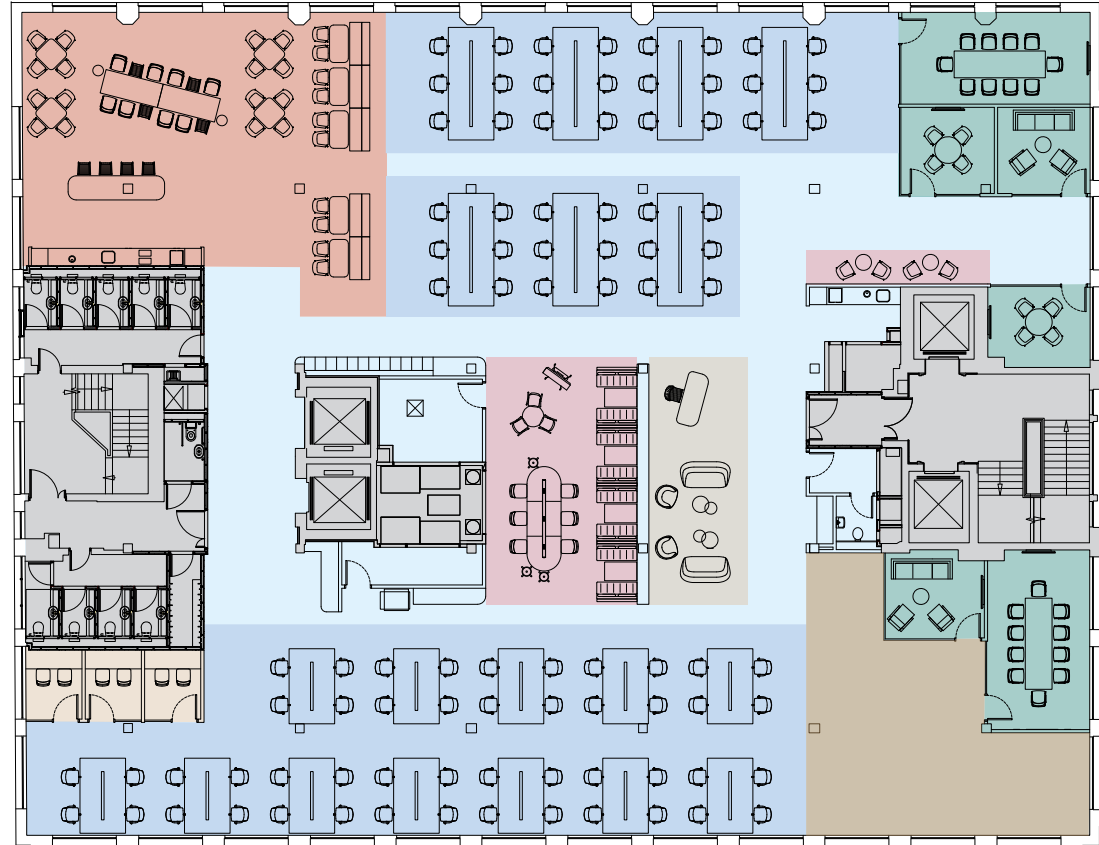
6th Floor

Ready to Work (As-Built)
10,726 Sq Ft / 997 Sq M

- Touchdown / Individual Focused
- Breakout / Informal Working
- Enclosed Meeting
- Open Collaboration / Co-working
- Flexible Area
- Phone Booths
- Reception
- Core

- 90 x Touchdown Workstations
- 1 x Breakout / Informal Working Space
- 1 x Collaboration / Co-working Space
- 4 x Small Meeting Rooms (4pp)
- 2 x Medium Meeting Rooms (10pp)
- 3 x Phone Booths
- 1 x Reception Desk
- 2 x Teapoints

CHAMBER STREET



PRESCOTT STREET

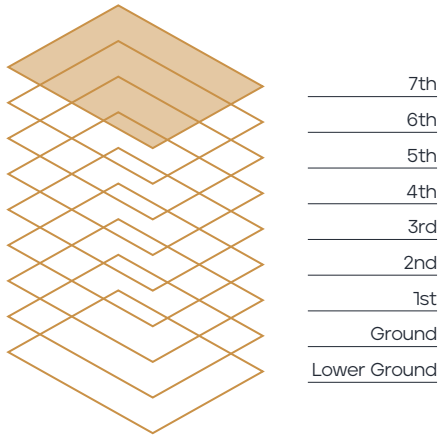
For indicative purposes. Not to scale.



Floor Plans

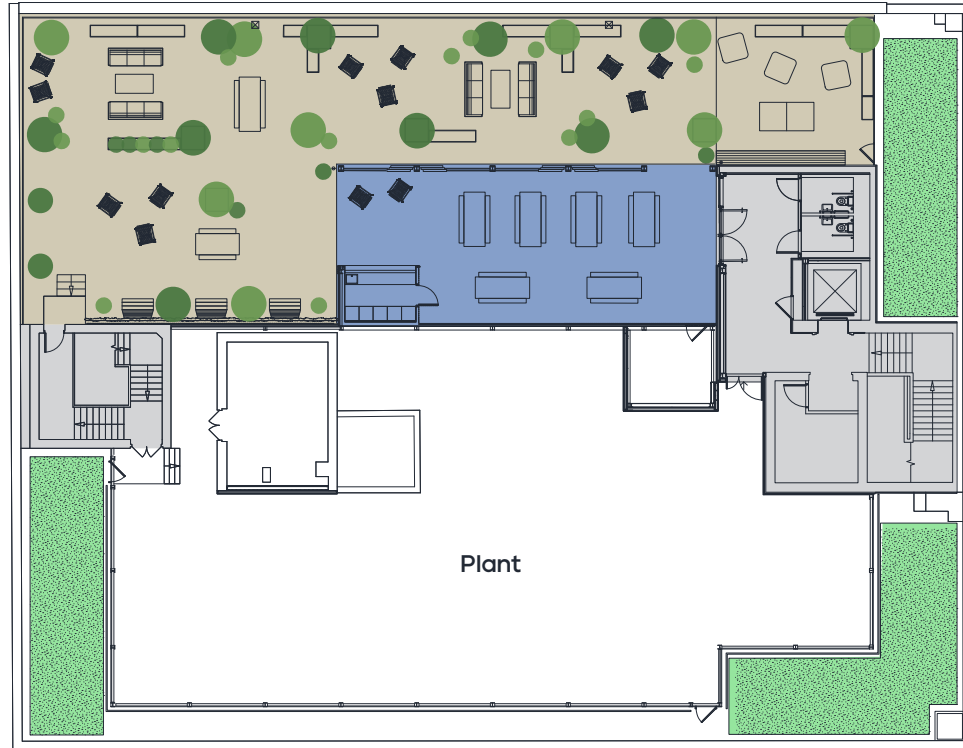
7th Floor

Communal Roof Terrace
3,356 Sq Ft / 312 Sq M



For indicative purposes. Not to scale.

CHAMBER STREET



PRESCOT STREET



● Terrace ● Pavilion ● Green Roof ● Core