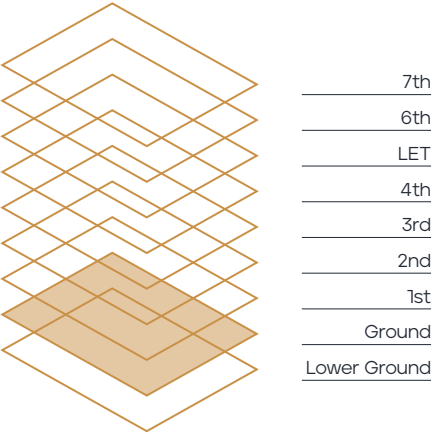


Ground Floor

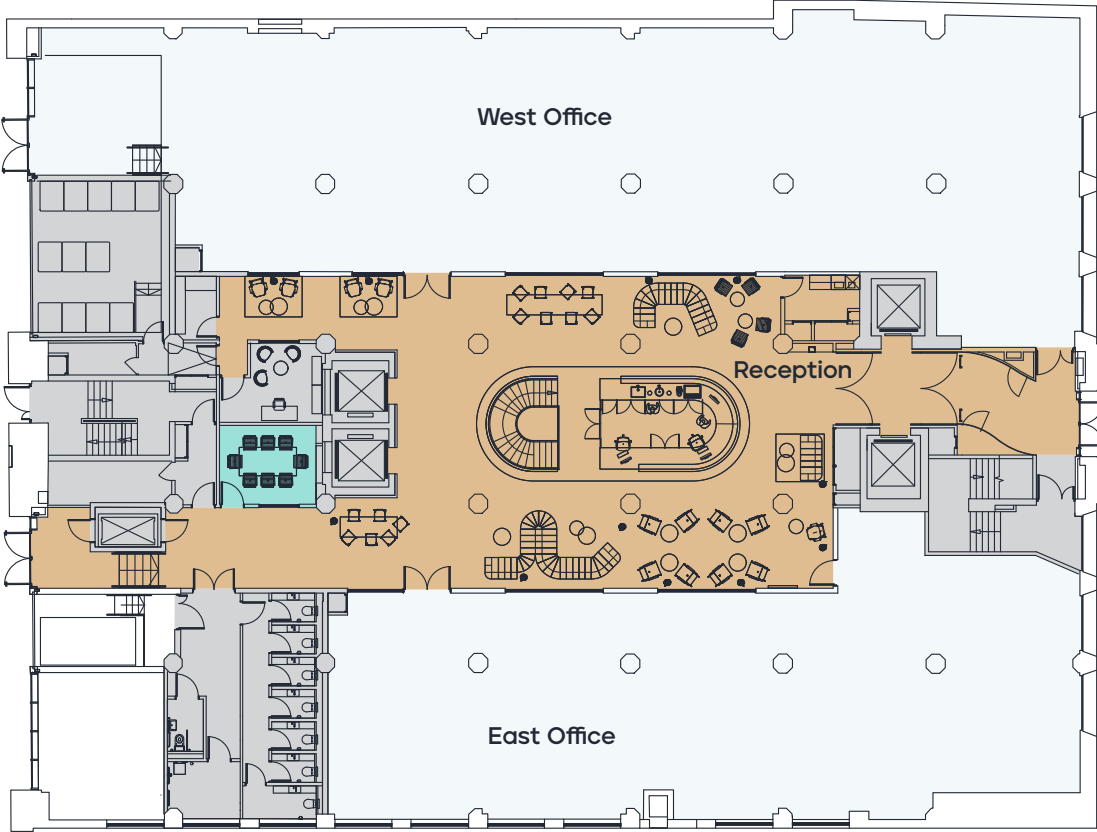
8,244 Sq Ft / 766 Sq M

- West Office**
4,833 Sq Ft / 449 Sq M
- East Office**
3,411 Sq Ft / 317 Sq M
- Reception**
3,293 Sq Ft / 306 Sq M



For indicative purposes. Not to scale.

CHAMBER STREET



PRESCOT STREET

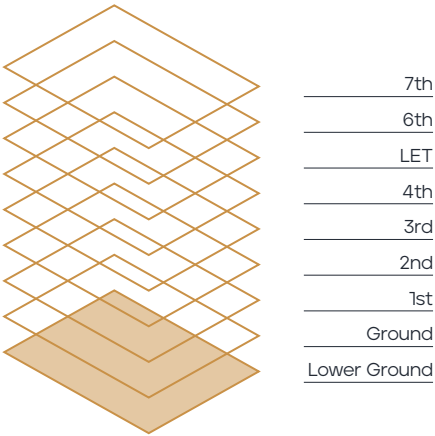


Office Core Reception Meeting Room

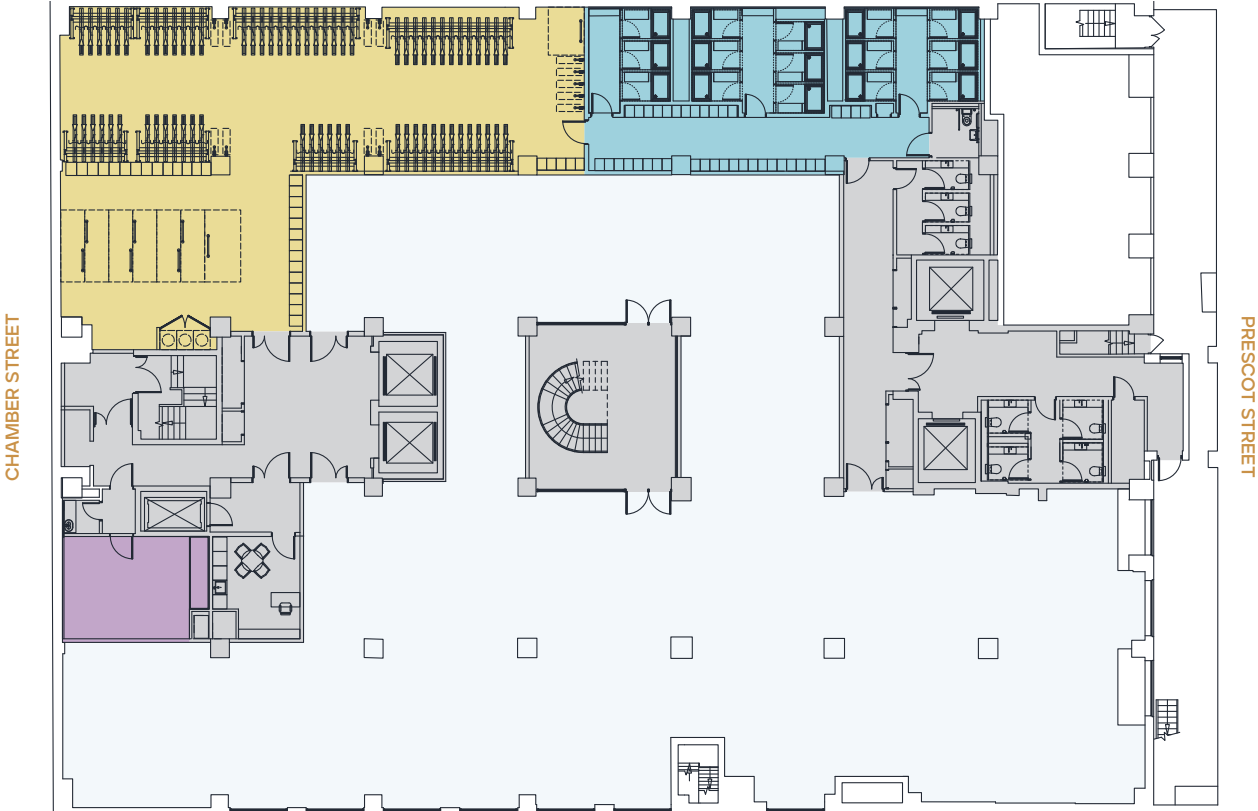
Floor Plans

Lower
Ground Floor
7,663 Sq Ft / 712 Sq M

- 15 showers
- 181 lockers
- 163 bicycle spaces
- 33 electric charging spaces
- 8 oversize spaces



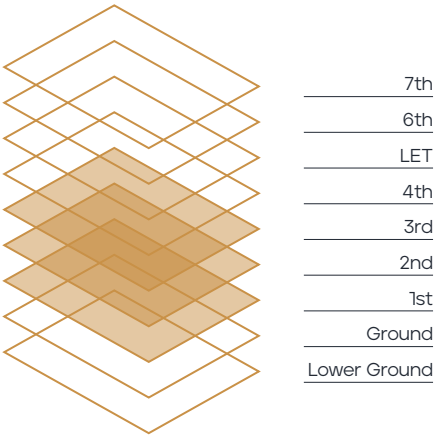
For indicative purposes. Not to scale.



Office Core Showers Cycle Store Multi Faith Room

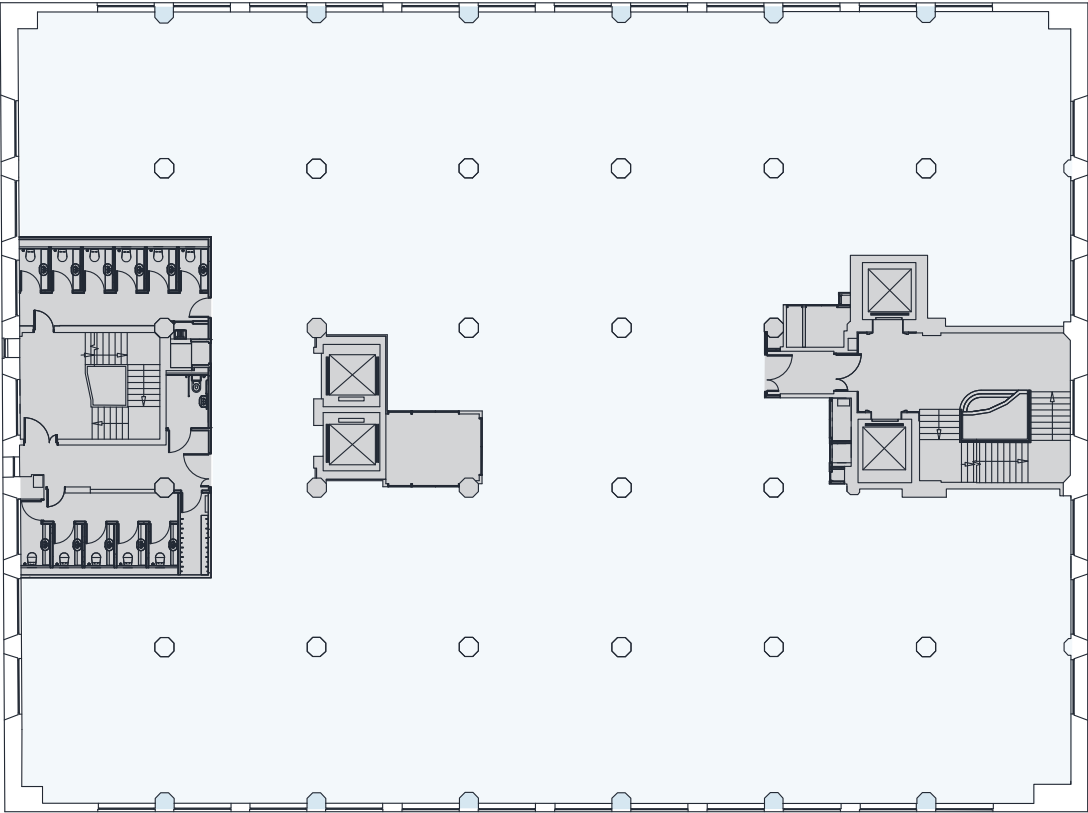
Floor Plans

1st-3rd Floor
13,039 Sq Ft / 1,211 Sq M



For indicative purposes. Not to scale.

CHAMBER STREET



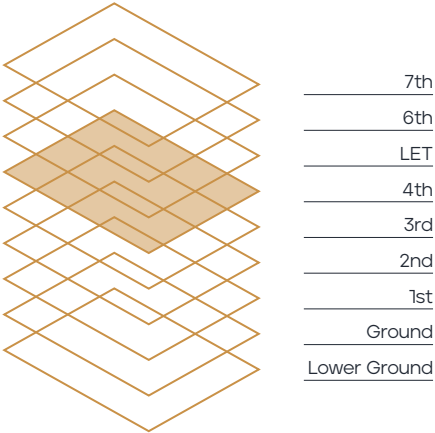
PRESCOT STREET



Office Core

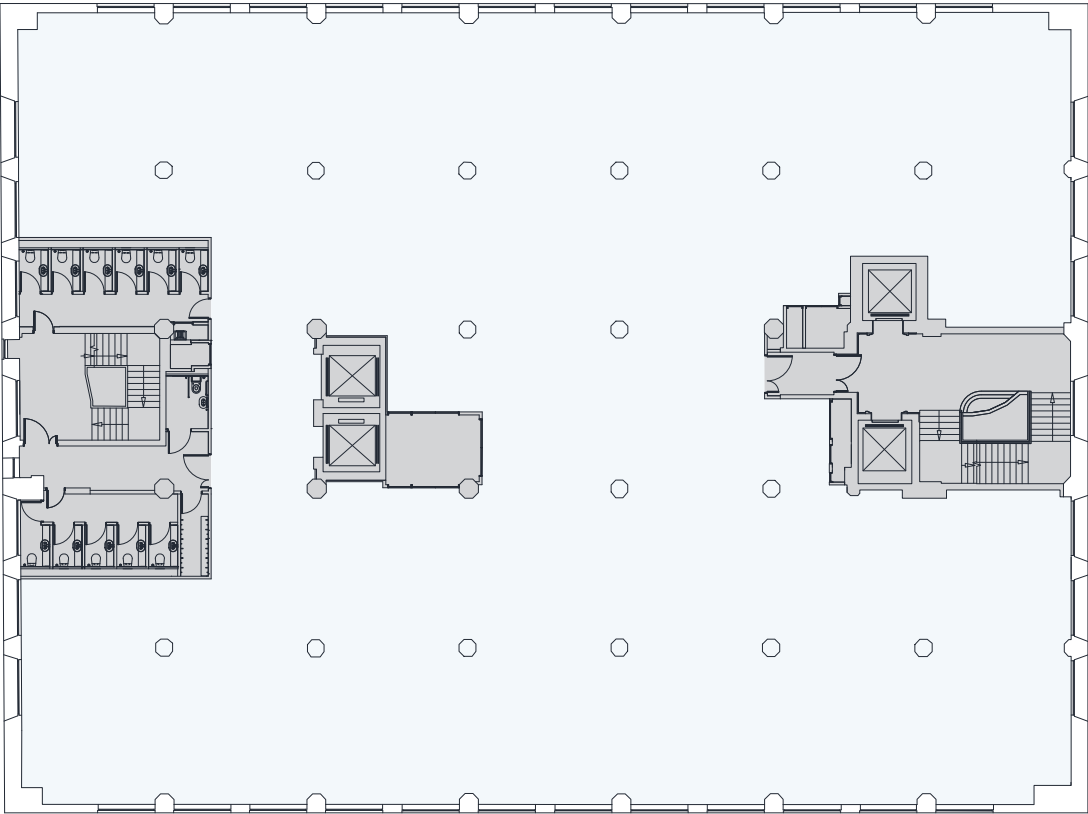
Floor Plans

4th Floor
13,100 Sq Ft / 1,217 Sq M



For indicative purposes. Not to scale.

CHAMBER STREET



PRESCOT STREET



Office Core

Floor Plans

6th Floor

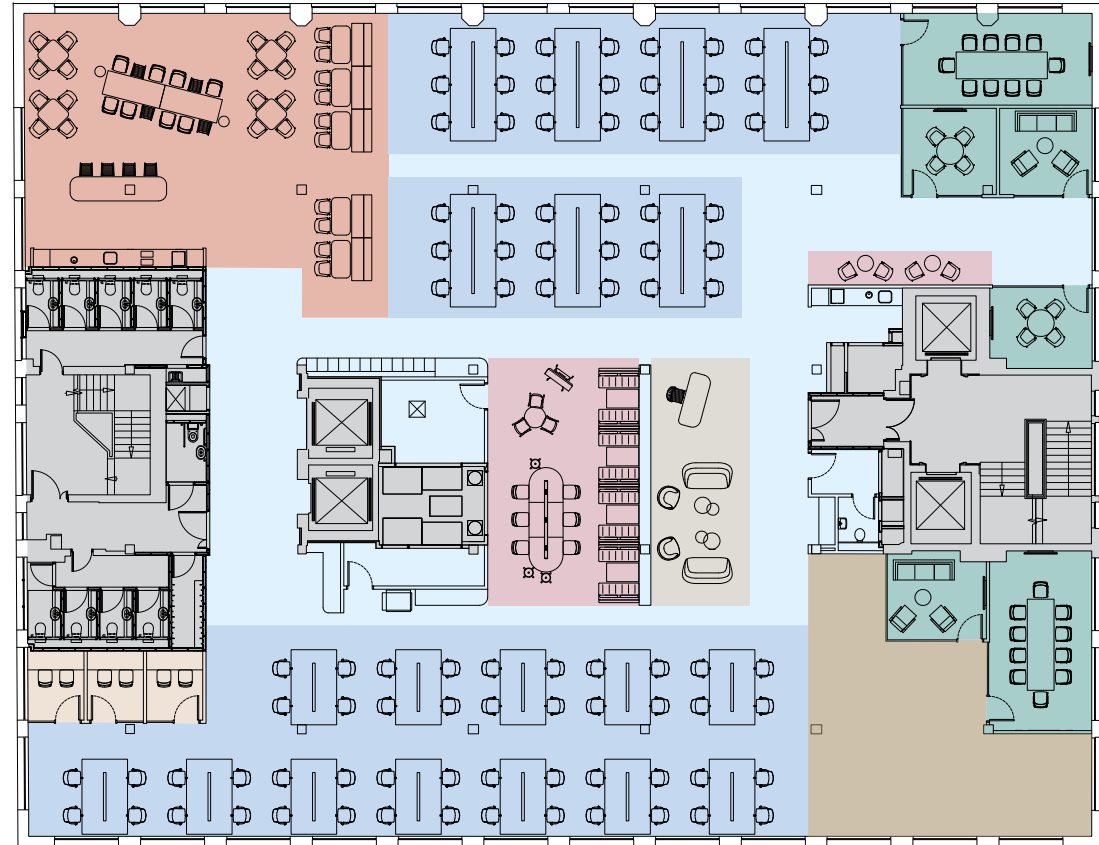
Ready to Work (As-Built)
10,726 Sq Ft / 997 Sq M

- Touchdown / Individual Focused
- Breakout / Informal Working
- Enclosed Meeting
- Open Collaboration / Co-working
- Flexible Area
- Phone Booths
- Reception
- Core

90 x Touchdown Workstations
 1 x Breakout / Informal Working Space
 1 x Collaboration / Co-working Space
 4 x Small Meeting Rooms (4ppl)
 2 x Medium Meeting Rooms (10ppl)
 3 x Phone Booths
 1 x Reception Desk
 2 x Teapoints

For indicative purposes. Not to scale.

CHAMBER STREET



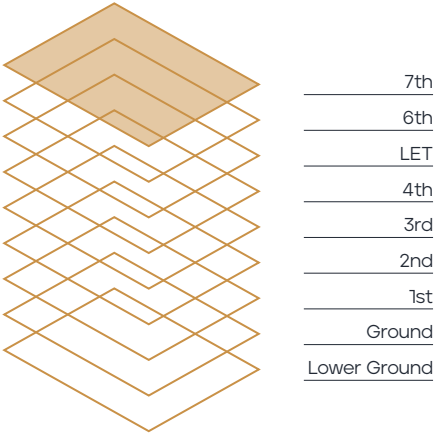
PRESCOT STREET



Floor Plans

7th Floor

Communal Roof Terrace
3,356 Sq Ft / 312 Sq M



For indicative purposes. Not to scale.

CHAMBER STREET



PRESCOT STREET



Terrace Pavilion Green Roof Core